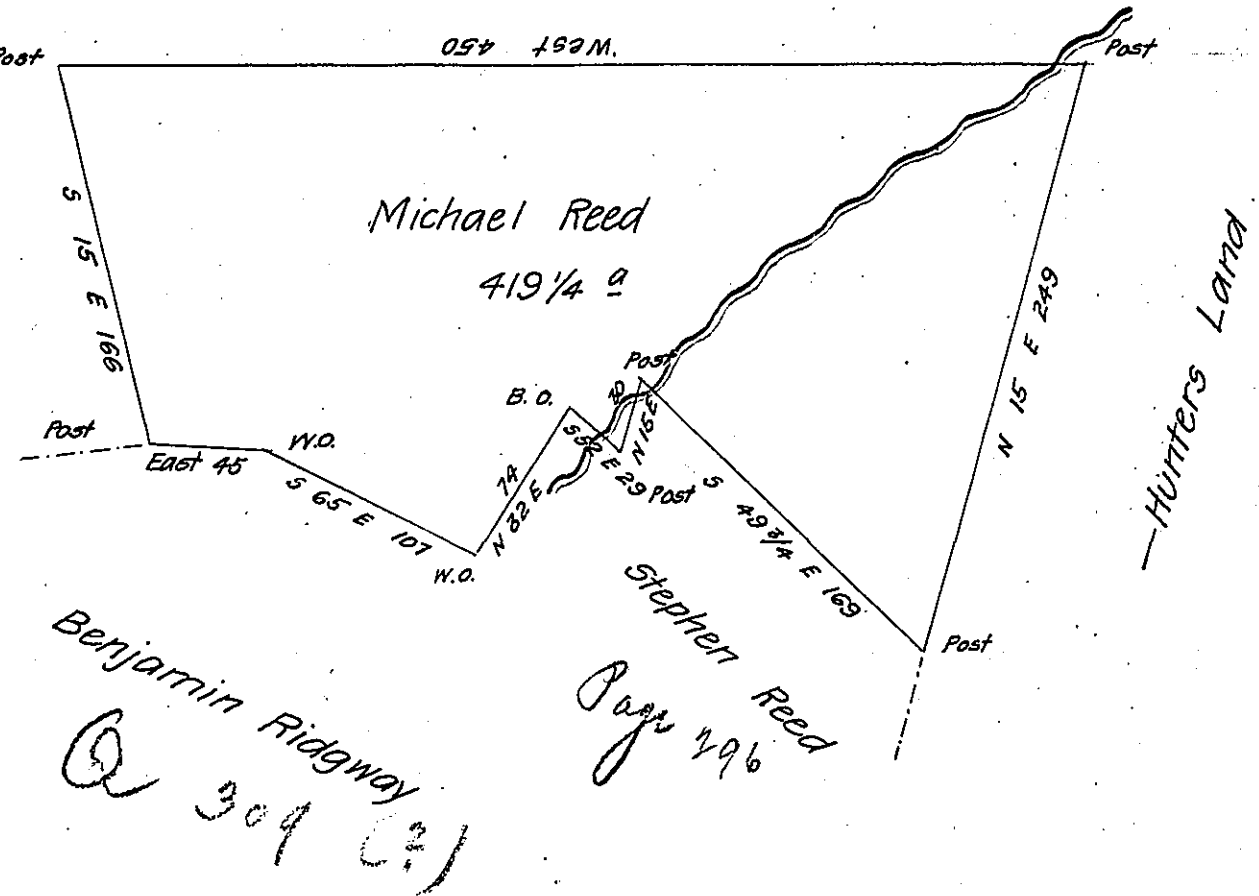


Richard Reed



Situated on the waters of Sidling Hill Creek Colerain Township Bedford County Containing 419 1/4 Acres with the usual Allowance of Six pr. Cent for roads &c.<sup>a</sup> Surveyed for Michael Reed the 10<sup>th</sup> day of October 1794 on warrant dated the 21<sup>st</sup> day of February 1794.

Pr George Woods D.S.

Examined by me Dec<sup>r</sup> 15<sup>th</sup> 1808

John Anderson

To Samuel Cochran Esqr.  
Surveyor General

Deputy Surveyor

IN TESTIMONY that the above is a copy of the original remaining on file in the Department of Internal Affairs of Pennsylvania, made conformably to an Act of Assembly approved the 16th day of February, 1833, I have hereunto set my Hand and caused the Seal of said Department to be affixed at Harrisburg, this twenty first day of November 1906

*Loac R Brown*  
Secretary of Internal Affairs.